

Installation Instructions :

Before beginning make certain that the unit main and battery power is turned off.... If in any doubt do NOT proceed

Remove all power from the current unit.

Remove 2 screws at top rh and lh side and one in bottom centre

Remove clock from mounting.

The external fob reader has 2 wires maybe grey/black or green / blue

IF the wires to the external FOB are Green and Blue then the Green connects to the Grey in the new clock connector and the blue to the black,.

Power to the current clock is in connector position 1 = 12VDC and -12VDC is in position 2. Earth is in position 3 and this must be in place..

Remove the wire from pin one and this connects to the red wire on the connector on the new clock

The new clock has a reset switch so this wires connect to the 3 piece connector block and NOT back into the connector.

Put Ground into connector pin 2 and earth into pin 3.

Unplug the network cable and reconnect into the new clock.

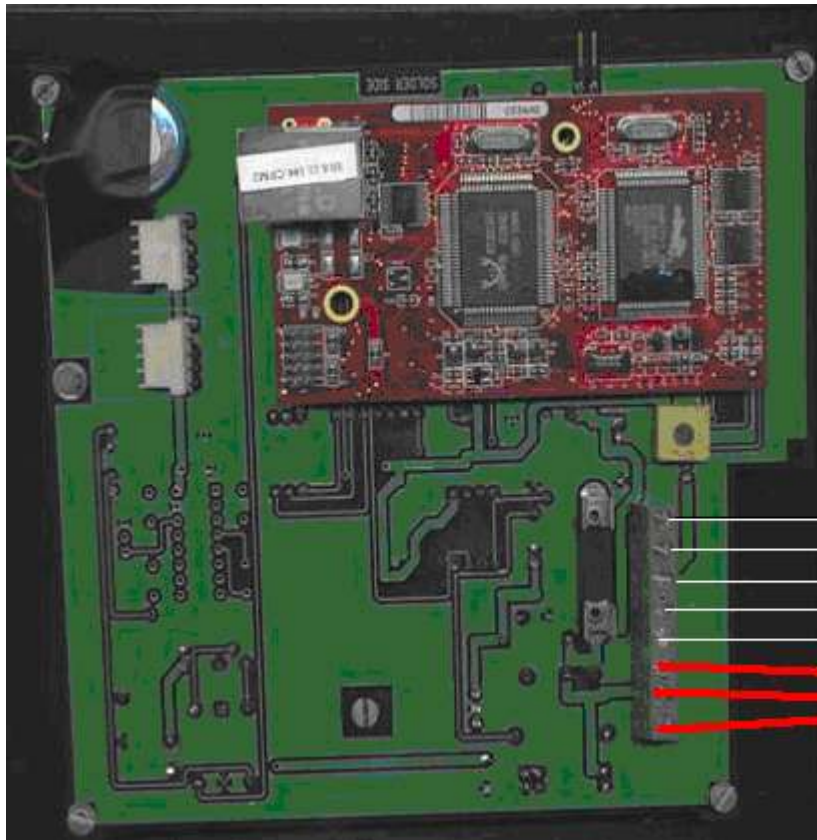
Replace the clock on the wall and re insert screws.

Power up the clock it will show date & 12.00 but when reset by the s/w the time will be set and then you can try a fob for clocking. Check both the fob on the clock and the One on the cabinet door.

NOTE :

Check and double check all connections before re-mounting the clock unit.

IF IN DOUBT CALL WIZTEC AT 021-4316881.



- +12 VDC
- 12VDC
- Earth
- FOB Grey
- FOB Black
- Relay Op Strap
- N/O
- N/C